



Appendix C

Using of MG with Generic Applications



for any information or support please do not hesitate to contact us

support@macrogenerator.net

or visit

www.macrogenerator.net

Summary

General Applications.....	3
Creating a Generic Type Workspace	4

General Applications

As we have mentioned, MG is able to control all Windows applications.

MG was born for EDIUS and over the years we have improved for all other kind of software, so we could call applications such as "General" applications that do not belong to editing videos, which can be controlled by MG.

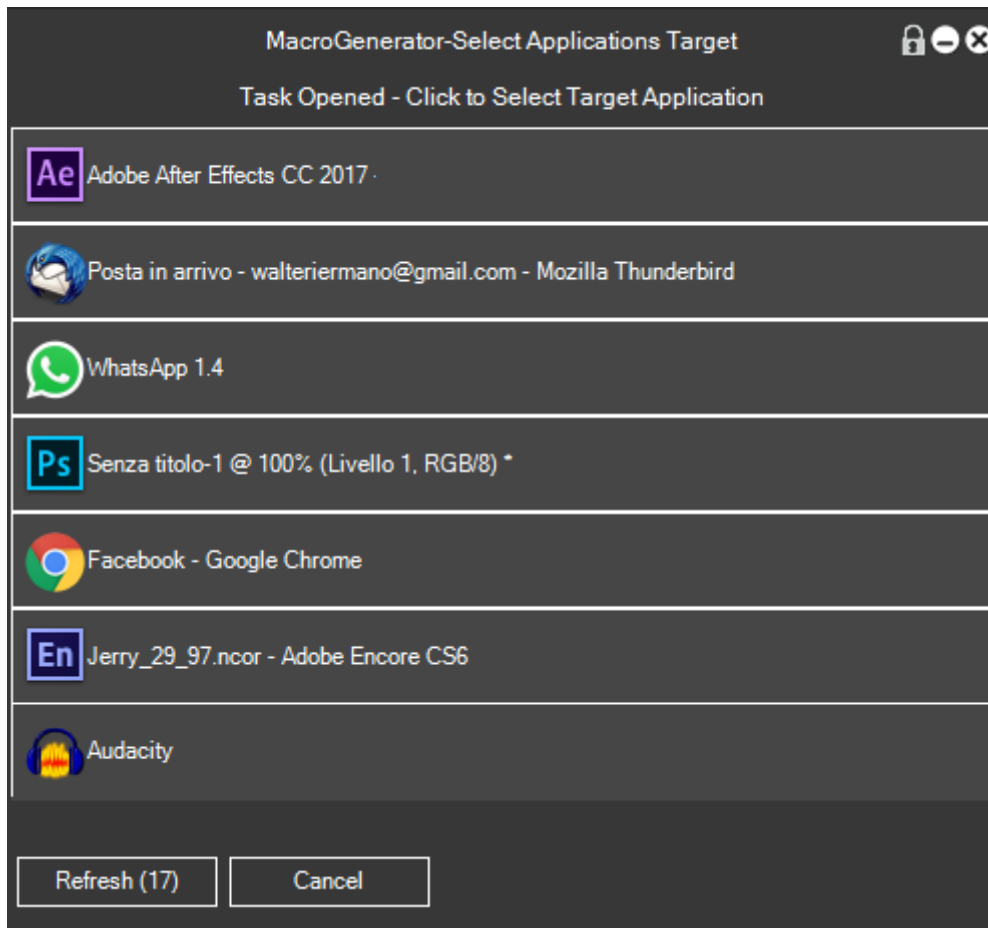
For general applications, the creation of a new workspace will be asked to select the type of application and will create useful macros common to all applications, the workspace once created, can be changed depending on user needs.

Creating a Generic Type Workspace

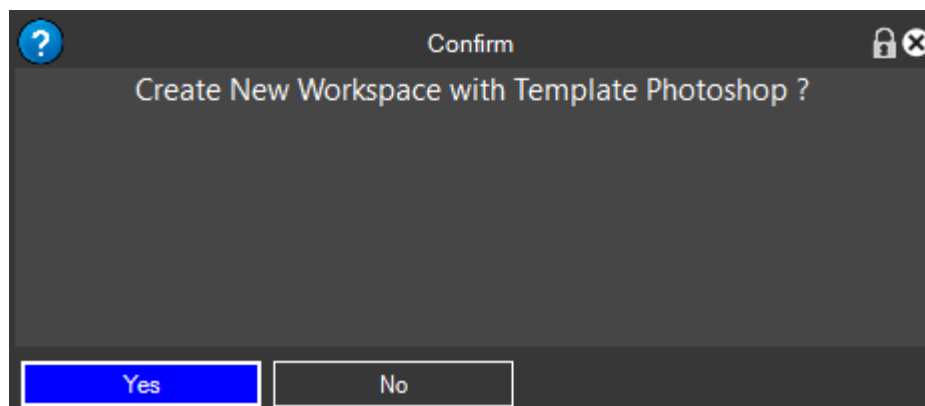
As we said MG is able to operate with all applications, if the application you want to control is not in the list of available templates, select the "Generic template"



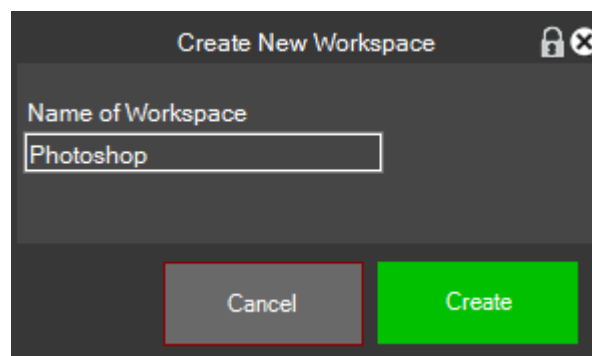
Clicking on the generic template will open the list of running applications, in our example we want to create a workspace for Adobe Photoshop, if it appears in the list of running applications we click its icon,



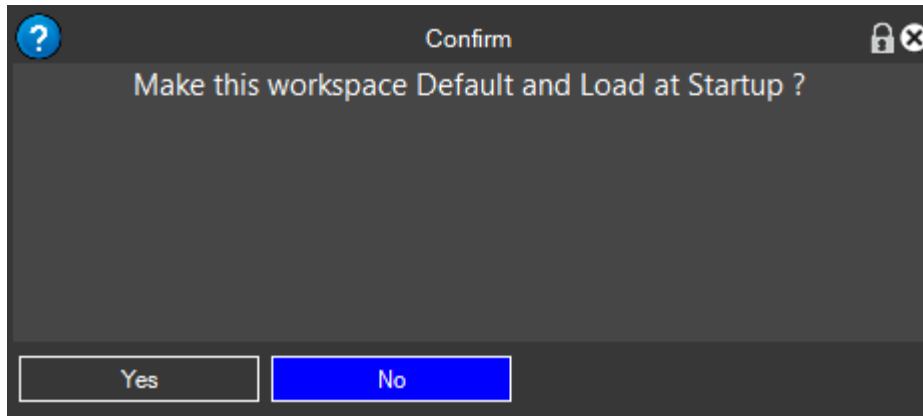
We are asked to confirm if you want to create a workspace for Photoshop, click on it,



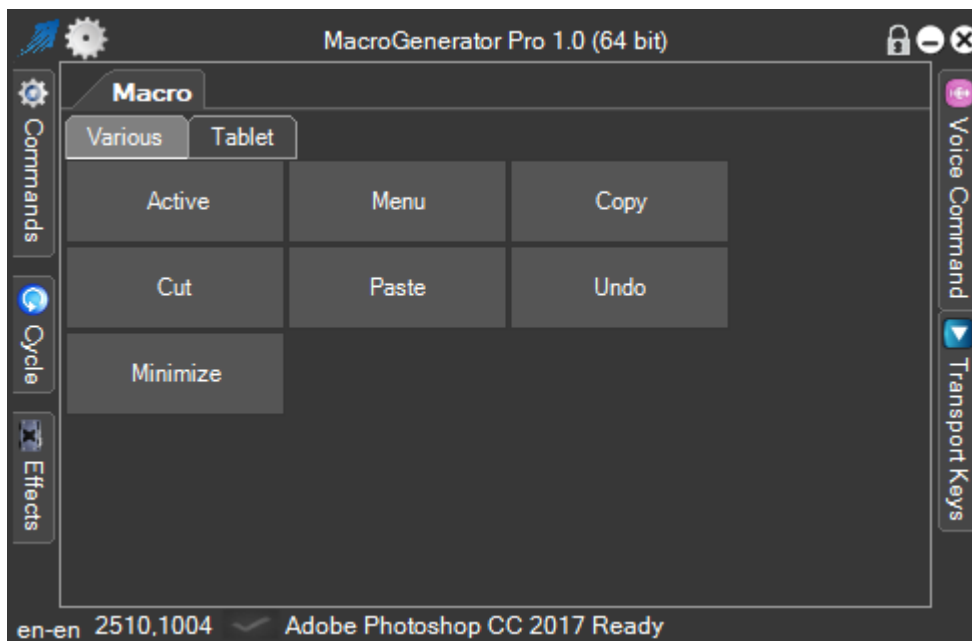
It asked the name of the new Workspace related to Photoshop, and click on "Create"



It is asked if this workspace should be a default workspace in order to be launched at startup of MG.



For a Generic application will create two tabs, where in the "Miscellaneous" there are more generic macro, and in the other tab, "Tablet", the macros that must be present on the tablet in case there a tablet is connected to MG,



From now on the workspace created it is ready to work with the application for which it was created and there we can create all macros that we need.